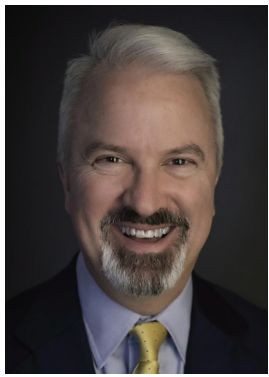




Kentucky Chamber is Better than Ever

COMING OUT OF 2021, GRIFFIN SAYS



WINSTON GRIFFIN
2021 BOARD CHAIR
Kentucky Chamber of Commerce
Chairman and CEO,
Laurel Grocery Company

2021 has seen many challenges as part of an ongoing global pandemic. But many areas of the state are also seeing exciting new successes as we seek to recover. Outgoing Kentucky Chamber Board Chairman Winston Griffin says he is proud of the innovative, outside-the-box approach the Chamber has taken to provide guidance, vision, and more value than ever to Kentucky's business community.

Griffin, the chairman and CEO of family-owned Laurel Grocery Company, has served on the Chamber Board for two full terms and had a very successful year as chair in 2021.

In an interview about his time in the role, he said this year has furthered his admiration for the Chamber because of the in-depth look at the internal operations and the quality of the people involved with the organization that only the chair gets to see, which he said gives him even more pride and confidence in the future of the Kentucky Chamber.

While this year has been a rollercoaster in many ways, Griffin said it has been a great year that not many could have expected.

"What we have been through has shown the responsiveness of the Kentucky Chamber. It rose to the occasion and there is no question things went well all through the year despite the odds against it. So, the Chamber really showed its true colors this past year," Griffin said.

2021 was also the year our organization is celebrating 75 years, and Griffin said the Kentucky Chamber is emerging as an even stronger and better organization after meeting usual goals and being able to do even more than ever.

[SEE GRIFFIN INTERVIEW, PAGE 2](#)



Diane Medley Elected 2022 Chair

OF THE KENTUCKY CHAMBER

Diane Medley, Executive Chairman and Co-Founder of MCM CPAs and Advisors, has been elected to serve as chairman of the Kentucky Chamber of Commerce for the 2022 term. Medley succeeds Winston Griffin, CEO and chairman of Laurel Grocery Company, whose term expired September 30.



DIANE MEDLEY
2022 BOARD CHAIR
Kentucky Chamber of Commerce
Executive Chairman
MCM CPAs and Advisors

While serving on the Kentucky Chamber's Board of Directors, Medley has held positions on the Chamber's Executive Committee and previously chaired the Chamber's Foundation Board.

[SEE 2022 CHAIR, PAGE 3](#)

COVID STOPS HERE RECOGNIZES KENTUCKY BUSINESSES WITH

Over 70% Vaccination Rate

In an effort to encourage vaccinations across the state and celebrate businesses that are leading the way in the fight against the coronavirus, the Kentucky Chamber of Commerce launched a campaign that recognizes workplaces with a 70% vaccination rate or higher. Since the start of the campaign in early August, COVID Stops Here has recognized almost 400 businesses across Kentucky.

The COVID Stops Here campaign recognizes companies as Bronze- over 70% vaccination rate, Silver – over 80% vaccination rate, Gold- over 90% vaccination rate, and Platinum- 100% vaccination rate. The majority of business participating in the campaign are above 90% vaccinated, with 278 out of 372 being at Gold or Platinum level as of mid-October.

With this campaign, the Kentucky Chamber created a sweepstakes series open to employees of businesses with over a 90% vaccination rate.

[SEE COVID STOPS HERE, PAGE 2](#)



FROM THE FRONT

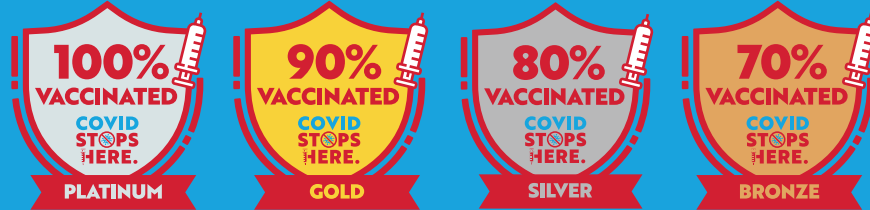
Covid Stops Here

Giveaways have included dozens of prizes from the University of Kentucky, University of Louisville, Louisville Football Club, Kentucky Distillers Association members, Kentucky Guild of Brewers members, and more. To date, the COVID Stops Here Sweepstakes has given prizes to over 60 employees of Kentucky companies.

"The COVID Stops Here campaign gives the Kentucky Chamber a chance to thank employers and employees for their tireless leadership during the coronavirus and for doing their part to promote vaccinations in their workplace. The vaccine is the one thing we know will stop this virus and it is critical we ensure the safety of all Kentuckians," said Kentucky Chamber President and CEO Ashli Watts. "We also want to thank our partners that have donated prizes to the COVID Stops Here Sweepstakes and recognize their commitment to encourage vaccinations."

See the list of companies participating at kychamber.com/covidstopshere.

Get recognition for your company's vaccination efforts!



Apply at kychamber.com/CovidStopsHere



FROM THE FRONT

Griffin Interview

"It is so interesting how the Chamber was steadily progressing the past several years on a straight path but like in life, events happen and you have to react and it changes the course of your trajectory. This pandemic has done that for the Chamber in a way that nothing has in the previous 74 years. It put us on a different path but it also elevated us because of our reaction to the event. We managed to not only navigate the pandemic but also advance at the same time, and that shows just how great this organization is that such an event didn't do us in, which could have happened," Griffin said. "It is unique how we got here and it looks like the 75th year is going to be our best ever despite the difficult circumstances we have all faced."

Looking forward, Griffin is excited to continue to be a part of the Kentucky Chamber and watch its growth under new Chair Diane Medley who he says will do a great job with such an impressive background running organizations and her involvement in so many critical areas across the state.

As for his message to businesses across the state, Griffin had this to say: "To anyone who is not a member of the Chamber, I would say you must not understand what all the Kentucky Chamber does because it is money very well spent to be a member and it means you have a voice in what the Chamber does and the future of this state."

HOF ENTREPRENEUR HALL OF FAME™ INDUCTION CELEBRATION

presented by CHASE

November 16, 2021

Griffin Gate Marriott Golf Resort & Spa | Lexington
5:00 p.m. Reception | 6:30 p.m. Dinner and Program

2021 Entrepreneur Hall of Fame Inductees



RANDALL BUFFORD
Founder/Chairman
Trilogy Health Services



PATRICK R. LANCASTER III
Chairman and Co-founder
Lantech



CAL TURNER, JR.
Chairman
Cal Turner Family Foundation



CAL TURNER (Posthumus)
Co-founder and Chairman
emeritus
Dollar General Corporation

Register Today

Individual \$125 | Student \$50 | Table of 10 \$1,000
entrepreneurhof.com | 502-848-8727 | lgoff@kychamber.com



Leadership Institute
for School Principals

Applications Open
in January for the
Class of 2022-2023!

Share the program with a principal in your area!

If you have questions or recommendations, please reach out to
Jessica Campbell at jcampbell@kychamber.com or (502) 848-8743.

Learn more at www.principalsleadky.com



27th Annual
KENTUCKY
CHAMBER DAY
DINNER

January 6, 2022 | Central Bank Center | Lexington

REGISTER NOW!

kychamber.com/events/kychamberday



2021 Chair Winston Griffin, 2022 Chair Diane Medley, and Kentucky Chamber President and CEO Ashli Watts

FROM THE FRONT

2022 Chair

"We are excited to welcome Diane as she takes over as chair of the Kentucky Chamber's Board of Directors," said Kentucky Chamber President and CEO Ashli Watts. "As a long-time member of the chamber and our board, Diane has played a key role in shaping and advancing our organization. We want to thank Diane for her dedication and look forward to the accomplishments we will achieve under her leadership over the next year!"

Medley, a native of Meade County, has spent 40 years leading the state in public accounting. In 1988, she co-founded Chilton & Medley, which later turned into Mountjoy Chilton Medley LLP in 2010. Since then, Medley has led MCM to be the largest CPA firm in the region and 72nd largest in the nation, with approximately 350 employees across six locations in Kentucky, Indiana, and Ohio. During the time she was the firm's managing partner and co-founder, Medley was recognized as the first woman in the region to have this leadership position within a major firm, and one of only a few in the U.S. Top 100.

In addition to Medley's years of service to the Kentucky Chamber, she has also served in many leadership capacities for the University of Louisville, her alma mater. Medley previously chaired the University of Louisville Foundation Board, currently serves as treasurer and board member on the University Board of Trustees, and is a board member, the secretary and finance committee chair of UofL Health, the entity that governs the university's hospital system.

Medley has been involved with many other organizations including Greater Louisville Inc., Louisville Chapter of NAWBO, and Kentucky Society of CPAs, Leadership Kentucky, Leadership Louisville, Indiana Chamber of Commerce, the Ogle Foundation and One Southern Indiana.

Kevin Smith, Beam Suntory vice president of Kentucky bourbon affairs, will serve as chair-elect for 2023.



KEVIN SMITH
2023 BOARD CHAIR-ELECT
Vice President of Kentucky Bourbon Affairs
Beam Suntory

The 2022 Chamber Executive Committee:

- **Immediate Past Chair:** Winston Griffin, *Chairman of the Board/CEO, Laurel Grocery Company, London, KY*
- **Vice Chair, Administration:** Mike Castle, *EVP, COO and CEO, Feed Division, Alltech, Inc.*
- **Vice Chair, Communications:** Stephen Branscum, *President & CEO, Branscum Construction Company, Russell Springs, KY*
- **Vice Chair, Membership and Business Services:** Garren Colvin, *CEO, St. Elizabeth Healthcare, Edgewood, KY*
- **Vice Chair, Public Affairs:** LaJuana Wilcher, *Partner, English Lucas Priest & Owsley, LLP, Bowling Green, KY*
- **Treasurer:** Scott Davis, *Chairman and CEO, Field & Main Bank, Henderson, KY*
- **Small Business Representative:** Conrad Daniels, *President, HJI Supply Chain Solutions, Louisville, KY*
- **Chair, Kentucky Chamber Foundation:** Candace McGraw, *CEO, Cincinnati/Northern KY International Airport, Erlanger, KY*
- **At-Large Member:** Spencer Coates, *President, Houchens Industries, Inc., Bowling Green, KY*
- **At-Large Member:** Susan Elkington, *President, Toyota Motor Manufacturing Kentucky, Georgetown, KY*
- **At-Large Member:** Mark Newman, *Executive Vice President, UK HealthCare, Lexington, KY*
- **President & CEO:** Ashli Watts, *President & CEO, Kentucky Chamber of Commerce, Frankfort, KY*

Newly-Elected Directors:

- **Shannon Arvin,** *President & CEO, Keeneland Association, Lexington, KY*
- **Donovan Blackburn,** *CEO, Pikeville Medical Center, Pikeville, KY*
- **Melissa Norman Bork,** *Partner, Dentons Bingham Greenbaum LLP, Louisville, KY*
- **Jim Coleman,** *Chairman & CEO, Coleman Crest Farm, Lexington, KY*
- **John Crockett III,** *President, LG&E and KU Energy LLC, Louisville, KY*
- **Jeb Duke,** *Regional President Kentucky Medicaid, Humana Inc., Louisville, KY*
- **Kimberly Halbauer,** *Kentucky Regional President, Fifth Third Bank, Kentucky, Louisville, KY*
- **Deanna Herrmann,** *CEO, London-Laurel County Chamber of Commerce, London, KY*
- **Anthony Houston,** *CEO, CHI Saint Joseph Health, Lexington, KY*
- **Nate Morris,** *Founder, Chairman & CEO, Rubicon Global, Lexington, KY*
- **OJ Oleka,** *President, Association of Independent Kentucky Colleges & Universities, Frankfort, KY*
- **Hollie Spade,** *Director, Legislative Affairs, AT&T, Louisville, KY*
- **Sharon Votaw,** *SVP, Chief Human Resource Officer, Lexmark International, Inc., Lexington, KY*

A full board listing, including members continuing their terms, can be found on Pages 4-5.

"I want to thank the Kentucky Chamber for the opportunity to serve as the organization's next chair of the board of directors," said MCM CPAs and Advisors Executive Chairman Diane Medley. "I am proud to help continue the Chamber's work to make Kentucky more business-friendly, improve the lives of every Kentuckian, and advance the Commonwealth."

Kentucky Chamber Board

MEETS IN LOUISVILLE

In September, the Kentucky Chamber Board of Directors held its quarterly board dinner and meeting in Louisville, sponsored by Planters Bank.



Jim Coleman, Coleman Crest Farm, speaks at Kentucky Chamber Board meeting



Jacqueline Pitts, Scott Jennings, and Matt Jones discuss Kentucky politics



Mark Sommer, Frost Brown Todd, leads a discussion on taxes in Kentucky



Hollie Spade AT&T, and Kevin Smith, Beam Suntory



Board members watch a presentation and participate in a discussion on taxes in Kentucky



Racial Inequity in Education, Criminal Justice, & Economic Opportunity

MUST BE A CRITICAL FOCUS OF POLICIES, KENTUCKY BUSINESS COMMUNITY SAYS

At a meeting of the Commission on Race and Access to Opportunity in October, representatives from the Kentucky Chamber discussed issues and solutions regarding racial inequality in the Commonwealth.

Kentucky Chamber President and CEO Ashli Watts told the group the state's largest business organization has pulled together leading experts from different sectors from across the state to work toward solutions in the areas of education, criminal justice, and economic empowerment.

Fact based research and data was the central focus, she said, of the Kentucky Chamber's "Achieving Equity to Build a Stronger Kentucky" report released in 2020 to offer long and short-term solutions to make aggressive progress to address racial inequality.

Ray Daniels, owner of Equity Solutions Group, noted the report shows alarming trends in education with massive gaps between white and Black students in terms of preparedness for life after high school as well as proficiency in all subjects and at all levels.

To address these issues, Daniels pointed to solutions suggested in the Chamber's report including more and better data being shared with groups frequently, better awareness of gaps in educational opportunity, diversity in teaching workforce, expanded access dual credit courses, improve accessibility of courses, making FAFSA a requirement for high school graduation, and more.

In terms of solutions for Kentucky's criminal justice system, Watts said the Chamber suggests that racial impact statements are required on legislation, reforms are made to the state's bail system, reclassifying minor drug charges to be misdemeanors, expanded access to expungement, ensuring all people leaving criminal justice system have a photo ID, access to KEES money for those who are formally incarcerated, and more.

Daniels emphasized it is not solely up to policymakers to solve these issues but the business community must step up as well. Along with the report and other work to address racial inequality, Daniels told the commission that the Kentucky Chamber Foundation is starting a Diversity, Equity and Inclusion Center and is in the process of hiring an executive director for that role and added the organization is working on many other fronts.

READ MORE

Read the Chamber's full report at [kychamber.com](https://www.kychamber.com).

KENTUCKY CHAMBER NAMES

John Cox Director of Public Affairs

In October, the Kentucky Chamber announced John Cox has been promoted to director of public affairs. Cox joined the Kentucky Chamber in December 2019 as manager of Public Affairs. He heads up the Kentucky Chamber's Healthcare, Infrastructure, and Agriculture/Equine Policy Councils. With the new title, Cox will take on a larger role in the organization's advocacy efforts and other areas.

"I greatly appreciate John's leadership on many important issues for the business community including our work on infrastructure investment and supporting our signature horse racing and bourbon industries. His experience with both communications and advocacy makes him a great asset to the Chamber and the public affairs team," said Kentucky Chamber Senior Vice President of Public Affairs Kate Shanks.



JOHN COX
DIRECTOR OF
PUBLIC AFFAIRS
KENTUCKY CHAMBER

Best Places to Work in Kentucky

ACCEPTING APPLICATIONS FOR 2022

Is your company a best place to work? Businesses are the backbone of Kentucky, and we want to celebrate yours! Do you think your organization has what it takes to be ranked among the best?

Applications must be submitted by Friday, December 3, 2021.

Visit bestplacestoworkkentucky.com/registration to learn more about the process and apply.





BRINGING CLASSROOMS to CAREERS

BUS TO BUSINESS 2021-2022 PROGRAM KICKS OFF TO *Connect Students with Employers & Future Job Opportunities*

As part of its ongoing efforts to bolster workforce development efforts throughout the Commonwealth, the Kentucky Chamber Workforce Center announced the launch of its Bus to Business program for the 2021-2022 school year.

Now in its third year, Bus to Business provides students with an opportunity to connect directly with Kentucky employers and learn about the many jobs and career pathways available to them as they continue their education.



“The Kentucky Chamber Foundation is committed to equipping our state with a strong, productive and diverse workforce it needs to flourish in the decades to come,” said LaKisha Miller, executive director of the Kentucky Chamber Foundation Workforce Center. **“Students participating in Bus to Business get an unmatched opportunity to see inside the companies that call Kentucky home and find out what they are looking for in job candidates and employees. This innovative program is transforming the way students think about their careers and getting them excited about their futures.”**

Workforce Wednesdays

Workforce Wednesdays will be held weekly via Zoom throughout the school year. During these webinars, employers from a wide range of industries will discuss their businesses, highlight career opportunities and pathways, offer virtual tours and share employee success stories.

“Now is the perfect time to educate Kentucky students on the jobs that await them in our industry. Bus to Business offers us an outstanding

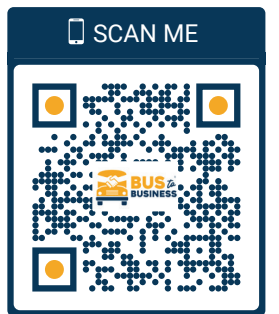
platform to do it,” said Susan Brewer, Gray Construction vice president of human resources. **“As Kentucky continues to announce record-breaking investments and economic development projects, we want students to be aware of the many career pathways that construction companies can provide them, what they entail and what they can do now to prepare.”**

Monthly Contests Will Reach Students in Grades K-12

This year, Bus to Business is also introducing a series of new monthly contests to engage students of all ages. Learn more about these contests for K-5, middle school, and high school students at kychamber.com/bustobusiness.

By getting more students excited about potential career opportunities from a younger age, the Kentucky Chamber Foundation Workforce Center and its Bus to Business partners hope to make a positive impact in building and strengthening our talent pipelines in all industries.

To date, Bus to Business has engaged more than 40,000 students from over 185 schools across Kentucky, with participation from more than 85 businesses statewide.



MORE INFORMATION

For more information on Bus to Business, please visit kychamber.com/bustobusiness.

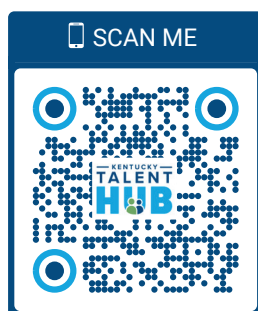
KENTUCKY CHAMBER FOUNDATION LAUNCHES KENTUCKY TALENT HUB, *An Online Platform to Connect Employers & Job Seekers*

As Kentucky ranks 48th in the nation in workforce participation, and employers continue to struggle to find talent while recovering from the COVID-19 pandemic, the Kentucky Chamber Foundation and Workforce Center have launched Kentucky Talent Hub, an online platform to connect employers and job seekers.



Kentucky Talent Hub will take the place of “Who’s Hiring,” which was launched by the Kentucky Chamber to help promote the many open positions across the state amid the pandemic. Between March 2020 and August 2021, Kentucky companies posted over 108,000 jobs to the Who’s Hiring page.

With the new user-friendly, automated website designed by Ulimi, Kentucky Talent Hub is a dynamic platform with the goal of better connecting employers, job seekers, and workforce development professionals to help address Kentucky’s workforce needs.



KENTUCKY CHAMBER OF COMMERCE

2022 Leadership



Executive Committee *Officers and Regional Representatives*

Board Chair	Chair-Elect	Immediate Past Chair	Vice Chair, Administration	Vice Chair, Communications and Marketing	Vice Chair, Membership & Business Services	Vice Chair, Public Affairs	Treasurer
							
Diane Medley Executive Chairman MCM CPAs & Advisors Louisville	Kevin Smith VP, Kentucky Bourbon Affairs Beam Suntory Clermont	Winston Griffin Chairman of the Board & CEO Laurel Grocery Company London	Mike Castle EVP, COO & CEO, Feed Division Alltech, Inc. Nicholasville	Stephen Branscum President & CEO Branscum Construction Company Russell Springs	Garren Colvin CEO St. Elizabeth Healthcare Edgewood	LaJuana S. Wilcher Partner English Lucas Priest & Owsley, LLP Bowling Green	Scott Davis Chairman & CEO Field & Main Bank Henderson
Small Business Representative	Chair, Kentucky Chamber Foundation	At-Large Member	At-Large Member	At-Large Member	President & CEO		
							
Condrad Daniels President HJI Supply Chain Solutions Louisville	Candace McGraw CEO Cincinnati/Northern KY International Airport Erlanger	Spencer Coates President Houchens Industries, Inc. Bowling Green	Susan Elkington President Toyota Motor Manufacturing Kentucky, Inc. Georgetown	Mark Newman Executive Vice President for Health Affairs UK HealthCare Lexington	Ashli Watts President & CEO Kentucky Chamber of Commerce Frankfort		

Board of Directors *Business leaders from every region in the state who govern the Kentucky Chamber*

										
Matt Adams General Manager/General Affairs & Human Resources Sumitomo Electric Wiring Systems Bowling Green	Shannon Arvin President & CEO Keeneland Association Lexington	Calvin Barker Regional President Truist Louisville	P. Douglas Barr Managing Director Stoll Keenon Ogden PLLC Lexington	Donovan Blackburn CEO Pikeville Medical Center Pikeville	Melissa Norman Bork Partner Dentons Bingham Greenbaum LLP Louisville	Gabby Bruno Regional Governmental Affairs Director Ford Motor Company Louisville	Kimra Cole President & Chief Operating Officer Columbia Gas of Kentucky, Inc. Lexington	Jim Coleman Chairman & CEO Coleman Crest Farm Lexington	Gerard Colman CEO Baptist Health Louisville	Jonathan Copley President Aetna Better Health of Kentucky Louisville
										
Paul Costel Region Manager I Commercial Banking Chase Louisville	Russell Cox President & CEO Norton Healthcare Louisville	John Crockett III President LG&E and KJ Energy LLC Louisville	Brian A. Cromer Member Sites & Harbison, PLLC Louisville	Dr. Paul Czarapata President Kentucky Community & Technical College System Versailles	Jeb Duke Regional President Kentucky Medicaid Humana Inc. Louisville	Les Fugate VP and Director, State and Local Public Affairs Brown-Forman Louisville	Mark Gooch President & CEO Community Trust Bank, Inc. Pikeville	Mark Guilfoyle Partner DBL Law Crestview Hills	Kimberly Halbauer Kentucky Regional President Fifth Third Bank, Kentucky Louisville	Adam Hancock President Riney Hancock CPAs PSC Owensboro
										
Chad Harpole Director of Government and Community Affairs Century Aluminum of Kentucky Hawesville	Larry Hayes* Interim Secretary Cabinet for Economic Development Frankfort	Anthony Houston CEO CHI Saint Joseph Health Lexington	Cindy Johnson President Mountain Top Media Pikeville	Jason Keller Vice President, Government Affairs & Regulatory Strategy Charter Communications Louisville	Amy Luttrell President & CEO Goodwill Industries of Kentucky, Inc. Louisville	Mark Martin Vice President, Rates & Regulatory Affairs Atmos Energy Owensboro	Brett Mattison President & COO AEP - Kentucky Power Ashland	John Megibben Vice President Messer Construction Louisville	Steve Merrick President & Owner Somerset Hardwood Flooring, Inc. Somerset	Nate Morris Founder, Chairman & CEO Rubicon Global Lexington
										
Bill Mudd President & Chief Operating Officer Churchill Downs Inc. Louisville	OJ Oleka* President Association of Independent Ky. Colleges & Universities Frankfort	Chris Perry President Kentucky Association of Electric Cooperatives Louisville	Scott Powell Market President & Senior Commercial Team Leader U.S. Bank Paducah	Edward Quinn President & CEO R. J. Corman Railroad Group LLC Nicholasville	Lennie Rhoades CEO Big Ass Fans Lexington	Jay Richert Refining General Manager Marathon Petroleum Company, LP Catlettsburg	James Rickard Market Chairman WebBank Louisville	Nick Rowe Sr. VP Southeast Division & President Kentucky American Water Lexington	Mark Sommer Member Frost Brown Todd LLC Louisville	Hollie Spade Director Legislative Affairs AT&T Louisville
										
Matthew Tackett* President & CEO Kentucky Association for Economic Development Frankfort	Aaron Thompson* President Kentucky Council on Postsecondary Education Frankfort	Sharon Votaw SVP, Chief Human Resource Officer Lexmark International, Inc. Lexington	Cathy Waddell CFO Nucor Ghent	Art Walker, III President Walker Construction Mount Sterling	Kennan Wethington President, Kentucky Commercial Business Anthem Blue Cross and Blue Shield of Kentucky Louisville	Elmer K. Whitaker CEO Whitaker Bank, Inc. Lexington	Kelley Workman President Planters Bank, Inc. Hopkinsville			

Local Chamber Advisory Board

									
Candace Brake* President & CEO Greater Owensboro Chamber Owensboro	Ron Bunch* President & CEO Bowling Green Area Chamber Bowling Green	Bobby Clue* Executive Director Somerset Pulaski County Chamber Somerset	Brent Cooper* President & CEO Northern Kentucky Chamber Ft. Mitchell	Tim Gibbs* President & CEO Ashland Alliance Ashland	Jordan Gibson* President & CEO Southeast Kentucky Chamber Pikeville KCCE President	Deanna Herrmann* CEO London-Laurel County Chamber of Commerce London	Bob Quick, CCE* President & CEO Commerce Lexington Inc. Lexington	Sarah Davasher- Wisdom* President & CEO Greater Louisville Inc. Louisville	Sandra Wilson* President Paducah Area Chamber Paducah

* Ex-Officio

KENTUCKY CHAMBER OF COMMERCE

Key Investors



Key investors are an exclusive group of top Kentucky executives whose companies provide significant financial support and leadership for Chamber involvement in critical issues affecting businesses.

Commonwealth Partners																	
	Jonathan Copley Louisville	Kennan Wethington Louisville	Kevin Smith Clermont	Lawson Whiting Louisville	Bruce Broussard Louisville	John Crockett III Louisville	Susan Elkington Georgetown	Calvin Barker Louisville	Brendan Canavan Louisville								
	Chairman's Circle																
		Brett Mattison Ashland	Hood Harris Louisville	Gerard Colman Louisville	Jason Keller Louisville	Sherri Craig Lexington	Ryan Lindsey Waco, TX	Jude Thompson Louisville	Kevin Canafax Covington	Terry Forcht Corbin/Lexington	Spencer Coates Bowling Green	Christopher Perry Louisville	Allen Waugerman Lexington	Russell Cox Louisville			
		Champions															
			John Farris Ghent	Donovan Blackburn Pikeville	John Gohmann Lexington	Nate Morris Atlanta, GA	Mark Newman Lexington	William Jones Paducah	James Rickard Louisville	Deirdre Lyons Nicholasville	Mark Martin Owensboro	Rick Tucker Winchester	Bill Mudd Louisville	Janet Jakubowicz Louisville	Amy Spiller Cincinnati, OH		
			Advisors														
Stephen Behnke Lexington				Scott Bowers Louisville	Josh Brown Franklin, TN	Bill Lear Lexington	Joseph Craft, III Lexington	Joe Nolan Washington, District of Columbia	Hollie Harris Lexington	Robert Berry Henderson	Michael Yungmann Irvine	Luther Deaton, Jr. Lexington	Robert Strub Florence	Kimra Cole Lexington	Mark Guilfoyle, Esq. Crestview Hills		
Trustees																	
	Jeff Billingsley Erlanger			Laura Holoubek Lexington	Maverick Bentley Birmingham, AL	Nick Dilks Baltimore, MD	Bill Johnson Louisville	Michael K. Ash Louisville	James Hackett Louisville	Mark Sommer Louisville	Michael Del Negro Louisville	Chris Reid Owensboro	Kim Shelton Lexington	Nick Rowe Lexington	John Sparrow Louisville	William Haugh Georgetown	
	Assured Partners																
		Hector Alvarez Lexington		Mike Buckentin Russellville	Taylor Teepell Des Moines, Iowa	Jay Richert Cattlettsburg	Darryl Phillips Nicholasville	Diane Medley Louisville	John Megibben Louisville	Cris Fuentes Ghent	Shannon Cales Louisville	Greg Strahan Owensboro	Andrew Corsig Cincinnati, OH	Dan Fannin Maysville	Ed Quinn Nicholasville	Joseph Steier, III Louisville	
		Commonwealth Credit Union															
			Larry Schaefer Louisville	Jamie Handley Florence	Bill Moneyenny Paris	Ray Takigiku Covington	Lennie Rhoades Lexington	Gil Steadman Henderson	Helen Fitzpatrick Lexington	Michael Taylor Frankfort	Barb McFarland Loveland, OH	Chad Harpole Hawesville	Scott Walton Herndon, VA	Paul Costel Louisville	Don Bloomer Somerset	Brian Outland Louisville	
			Meritor-Florence														
James Ayers Inez				Katie LaMonica Lexington	Stephen Gray Lexington	Rodney Wilson Berea	Jay Ingle Lexington	Gordon Rosenberry Cincinnati, OH	Dr. Paul Czarapata Versailles	Steve Merrick Somerset	James Chaney Lexington	Stephanie Bell Lexington	Winston Griffin London	Ashley Prall Nicholasville	Spencer Bruce Louisville	Anne-Tyler Morgan Lexington	Marlene Sanders Nashville, TN
Stantec																	
	Tim Bauer Florence			Kimberly Bauman Verona	James Sheehan Florence	Jak Knelman Bloomington, MN	Steve Rasmussen Columbus, OH	Derek Sublette Indianapolis, IN	Holly Broce Louisville	Bob Munday Lexington	Elizabeth McCoy Hopkinsville	Sean Riley Louisville	Steve Trager Louisville	George Howard Raleigh, NC	James Allen Louisville	Rod England Bowling Green	Vaughn Bell Boca Raton, FL
	US WorldMeds																
		Jason Maxwell Lexington		Jeffrey Phillips Lexington	Ja Hillebrand Louisville	Glenn Sullivan Louisville	Matt Adams Bowling Green	Virginia Gray Knoxville, TN	Carrie Butler Louisville	Paul Breck Jones Louisville	Melia Carter Rolling Meadows, IL	Jason Slates Frankfort	Elmer K. Whitaker Lexington				

Thank you for your investment.

The following is a list of new members of the Kentucky Chamber. Please help us thank these companies for investing in the Chamber's mission by giving them your business.

ADVISOR

Yum! Brands, Inc.

TRUSTEE

Avantor Performance Materials, Inc.
EDF Renewables
First National Bank
US WorldMeds, LLC

EQUITY PARTNER

Neat Companies

CORNERSTONE

Custom Packaging Co., Inc.
Maxson Firm, PLLC
NWK Construction, Inc.
Park Equine Hospital
RRJ Solutions
Sortino Advisory Partners, LLC

STAKEHOLDER

Benton Wood Products
Bio-Meth Management LLC
Central Financial Services of Kentucky
Community Health Centers of Western Kentucky, Inc.
Community Treatment and Tracking Solutions
Contemporary OB/GYN
Crowe LLP
Elite Rad Reporting, LLC dba Thynk Health
Henry M. Pike Trucking
ITW Powertrain Fastening
KY Saves 529
L Watson Trucking
Louisville Orchestra
Mehr, Fairbanks & Peterson
Mindel, Scott & Associates
Muhlenberg Alliance
NorthStar Sustainable Energy, LLC
Ohio Valley Veneer, Inc.
PDT LLC
Prevent Child Abuse Kentucky
Realm Construction Co. Inc.
Searcy Monument Co
Smiley Pete Publishing
Space Center Storage
Springfield-Washington County Chamber of Commerce
U.S. Medical Glove Company

KENTUCKY CHAMBER NEWS

For address changes and subscription information, call **502-848-8723**.



Over 50 local chambers from across Kentucky met at the Kentucky Chamber of Commerce Executives Annual Conference in September



KCCE Executive Director Amy Cloud, Murray Chamber President and CEO Michelle Bundren, London-Laurel County President Deanna Herrmann



From Left to Right: Rocky Adkins of the Office of Governor Beshear, Sandra Wilson of the Paducah Chamber, Amy Cloud of KCCE, Governor Andy Beshear, Diane Medley of MCM CPAs and Advisors, Ashli Watts of the Kentucky Chamber, Kevin Courtois of the U.S. Chamber, and Kate Shanks of the Kentucky Chamber

Local Chambers Recognized AS PART OF KENTUCKY CHAMBER OF COMMERCE EXECUTIVES 2021 EXCELLENCE AWARDS

Local chambers from across the state were recognized at the Kentucky Chamber of Commerce Executives (KCCE) 2021 Annual Dinner.

Congratulations to KCCE Chamber Professional of the Year Michelle Bundren, president and CEO of the Murray-Calloway County Chamber of Commerce.

"What an honor to be recognized among my chamber colleagues across the state as KCCE's 2021 Professional of the Year," said Bundren. "It is a privilege to promote and represent Calloway County in our state, and it is rewarding to be acknowledged for the hard work and passion we put into our jobs."



READ MORE

Find out the local chambers that received KCCE Annual Excellence Awards at kychamberbottomline.com.

2022 Kentucky Legislative Preview Conference

DECEMBER 17, 2021
GRIFFIN GATE MARRIOTT GOLF RESORT & SPA | LEXINGTON

The **2022 Kentucky Legislative Preview Conference**, presented by Westlake Chemical, will be held on **Friday, December 17** at the Griffin Gate Marriott Golf Resort & Spa in Lexington. We will discuss how the results of the upcoming elections will affect you and your business. That is why it is more important than ever for you to be involved and hear what's on the horizon for the coming year. The conference will feature important discussions with lawmakers from both sides of the aisle, as well as issue experts.

LEARN MORE

Visit kychamber.com/legislativepreview to learn more.



2022 BOARD PRESIDENT

JORDAN GIBSON
PRESIDENT AND CEO,
SOUTHEAST KENTUCKY CHAMBER



NEW KENTUCKY TRANSFORMATIONAL EMPLOYMENT PROGRAM EMPOWERS BUSINESSES TO

Play a Leading Role in Addressing Addiction Crisis

As part of the state's ongoing efforts to address the Commonwealth's addiction crisis and provide meaningful support to Kentuckians impacted by substance use, the Kentucky Chamber of Commerce Foundation, Kentucky Cabinet for Health and Family Services, Kentucky Office of Drug Control Policy, Kentuckiana Health Collaborative and Kentucky Opioid Response Effort announced the launch of the **Kentucky Transformational Employment Program (KTEP)**.



The Kentucky Transformational Employment Program is a new, voluntary initiative to help employers across the Commonwealth find and retain the workforce they need to support and grow their businesses, while giving more Kentuckians the opportunity to access treatment and achieve remission and recovery from substance use disorders. Businesses that choose to participate in KTEP will help facilitate assessment and treatment for employees or offerees with substance use disorders.

"Kentucky's business community has long sought to be part of the solution for the terrible addiction crisis impacting our Commonwealth—and thanks to the Kentucky Transformational Employment Program, we now have a defined and viable pathway to do so," said Sherri Craig, vice president of public policy at CHI Saint Joseph

Health. "KTEP also helps employers address another critical challenge: finding and retaining quality employees. I commend the Kentucky General Assembly and Governor Beshear for recognizing these critical needs and supporting this innovative program."

"Kentucky currently ranks 48th nationwide for workforce participation, and the COVID-19 pandemic has only exacerbated this problem. Research shows that when the nation's unemployment rate increases by just one percent, the opioid overdose death rate rises by 3.6 percent," said LaKisha Miller, executive director of the Kentucky Chamber Workforce Center. "Fortunately, with the launch of the Kentucky Transformational Employment Program, we have one more tool to address this problem. With broad support from our businesses and employers, KTEP can strengthen our workforce and economy and make a real difference in the lives of our colleagues, neighbors and loved ones impacted by addiction."

More information, including training resources for employers and a form for businesses to sign up for the program, can be found online.

MORE INFO & RESOURCES

Visit kentuckycomeback.com/KTEP.

Mark Your Calendars

- Nov. 16, 2021** | Kentucky Entrepreneur Hall of Fame – Lexington
- Nov. 30-Dec. 1, 2021** | OSHA 10-Hour General Industry Voluntary Compliance Course – Lexington
- Nov. 30-Dec. 3, 2021** | OSHA 30-Hour General Industry Voluntary Compliance Course – Lexington
- Dec. 9-10, 2021** | Supervising and Managing People – Lexington
- Dec. 14, 2021** | OSHA's Respiratory Protection: Train the Trainer – Lexington
- Dec. 15, 2021** | OSHA Lockout/Tagout Train the Trainer – Lexington
- Dec. 17, 2021** | 2022 Kentucky Legislative Preview Conference – Lexington
- Jan. 6, 2022** | 27th Annual Kentucky Chamber Day – Lexington
- Feb. 8-9, 2022** | 5th Annual Kentucky OSH Management Conference – Lexington
- Feb. 15-16, 2022** | 7th Annual Kentucky Workforce Summit – Lexington
- Mar. 10-11, 2022** | 20th Annual Kentucky Environmental Conference – Lexington
- Mar. 24-25, 2022** | 13th Annual Health Care and Wellness Conference – Lexington
- June 9, 2022** | 18th Annual Best Places to Work in Kentucky – Lexington
- June 13, 2022** | Golf Invitational at Valhalla – Louisville
- June 21, 2022** | 4th Annual Kentucky Recovery in the Workplace Conference – Lexington
- July 21, 2022** | 2nd Annual Women's Summit – Lexington
- Aug. 30-Sept. 1, 2022** | 38th Annual KYSHRM Conference – Louisville



REGISTER OR SPONSOR AN EVENT

To register for an event visit kychamber.com or contact **Lori Jo Goff** at **502-848-8727** or lgoff@kychamber.com.

Sponsorship opportunities are available for many of these events. To learn more, contact **Andrea Flanders**, Director of Sponsorship Relations, at **502-848-8786** or aflanders@kychamber.com.

大成 DENTONS

BINGHAM
GREENEBAUM

What's Next? Talent.

Talent for what you need,
where you need it.



James Irving



David W. Tandy



Melissa Norman Bork

**Dentons, the law firm
of the future is here.**

[dentons.com](https://www.dentons.com)

© 2021 Dentons. Dentons is a global legal practice providing client services worldwide through its member firms and affiliates. Please see [dentons.com](https://www.dentons.com) for Legal Notices.


Kentucky Chamber
NEWS
OCTOBER 2021



KENTUCKY CHAMBER IS BETTER THAN EVER COMING OUT OF 2021, GRIFFIN SAYS



Kentucky Chamber
Uniting Business. Advancing Kentucky.