

“

“Since our inception in 1946, the Kentucky Chamber has worked to achieve the goal of uniting businesses and advancing Kentucky by ensuring the implementation of policies that protect and bolster our companies across the state. The Chamber works tirelessly for our members through innovative solutions to some of the state’s biggest issues. A lot has changed in 75 years. But one thing that remains constant is the Kentucky Chamber’s efforts to serve, protect, and advance businesses across the Commonwealth. Cheers to our first 75 years of leadership and results! We look forward to you, our members, joining us in making the next 75 years even brighter for Kentucky.”

— Ashli Watts
Kentucky Chamber President and CEO

”



KENTUCKY CHAMBER KICKS OFF *75th Anniversary*

The year was 1946.

Democrat Harry S. Truman was president. Republican Simeon Willis was Kentucky’s governor. Gas cost 15 cents a gallon, eggs cost 64 cents a dozen, the average annual wage was \$2,500, and ENIAC — the first and monstrously large programmable, general-purpose digital computer — made its national debut.

For Kentucky’s business community, the year also featured a particularly significant event — the incorporation of the Kentucky Chamber of Commerce. That official act followed more than two decades of

work and planning focused largely on efforts to ensure the state’s progress.

Seventy-five years of supporting the interests of thousands of Kentucky employers is cause for celebration. It also provides an opportunity to take a look at the organization’s accomplishments over the decades, culminating in the Restart Kentucky campaign that is providing guidance and leadership during the current coronavirus crisis.

[SEE 75TH ANNIVERSARY, PAGE 2](#)

RAY DANIELS: NEW LEGISLATION WILL HELP CLEAN UP KENTUCKY’S OUTDATED *Criminal Justice Laws*



RAY DANIELS
OWNER
EQUITY SOLUTIONS
GROUP
LEXINGTON

For many years, criminal justice advocates have been pleading with the General Assembly to take stock of outdated laws and make sure they meet the needs of Kentuckians today.

Many of these conversations have rightfully focused on how the criminal justice system approaches individuals in the strongholds of addiction. From these conversations, we have become more aware of the underlying factors that lead to incarceration and substance use and, on the flip side, what must be done to help them turn their lives around. As is the case with many issues facing our communities right now, much of the problem lies with our institutions and the policies and processes that govern them.

That’s why Kentucky Comeback, an initiative of the Kentucky Chamber of Commerce to transform our state’s approach to criminal justice and substance use, was proud to see the General Assembly pass several pieces of legislation this session that will give more Kentuckians a second chance at leading healthy, meaningful, productive lives.

In 2021, individuals in recovery and those advocating on their behalf worked alongside our legislators to make meaningful reforms, including:

- **Rep. Adam Bowling’s House Bill 7** establishes a “Recovery Ready” community framework. An advisory council made up of Kentucky leaders in health care, treatment, education, business, law enforcement and the public sector will work together to determine the comprehensive resources and services our cities, towns and counties need to be effective in preventing and treating substance use disorders. Then, they’ll take the next step to implement them so that Kentuckians in all 120 counties have equal opportunity to live addiction-free.
- **House Bill 497, sponsored by Rep. Kimberly Moser**, helps Kentuckians exiting the criminal justice system obtain ID so they can get back on their feet more easily. Having an ID is something that many of us take for granted, but for individuals who have served their time, an ID can help give them a second chance at taking the right path. The bill also tasks the Department of Corrections with issuing a “certificate of employability” to inmates who meet certain education and work requirements.
- **Rep. Ed Massey led the effort to pass House Bill 126**, which raises the felony theft threshold from \$500 to \$1,000. When applying for jobs, a felony charge can rule you out immediately, even if you’ve turned your life around since then.
- **Sen. Whitney Westerfield’s “juvenile justice” legislation**, originally filed as **Senate Bill 36**, allows juvenile court judges to use their discretion when deciding to transfer individuals 14 and older to adult court for certain offenses. When we think about people who end up in the criminal justice system, there is perhaps no group more vulnerable than young adults. They are at a true crossroads in life; showing them that a second chance is available, if they want it, can make all difference in the world.

[SEE NEW CRIMINAL JUSTICE LAWS, PAGE 2](#)

WORK SEARCH REQUIREMENT FOR UNEMPLOYMENT INSURANCE BENEFITS

Being Reinstated May 9

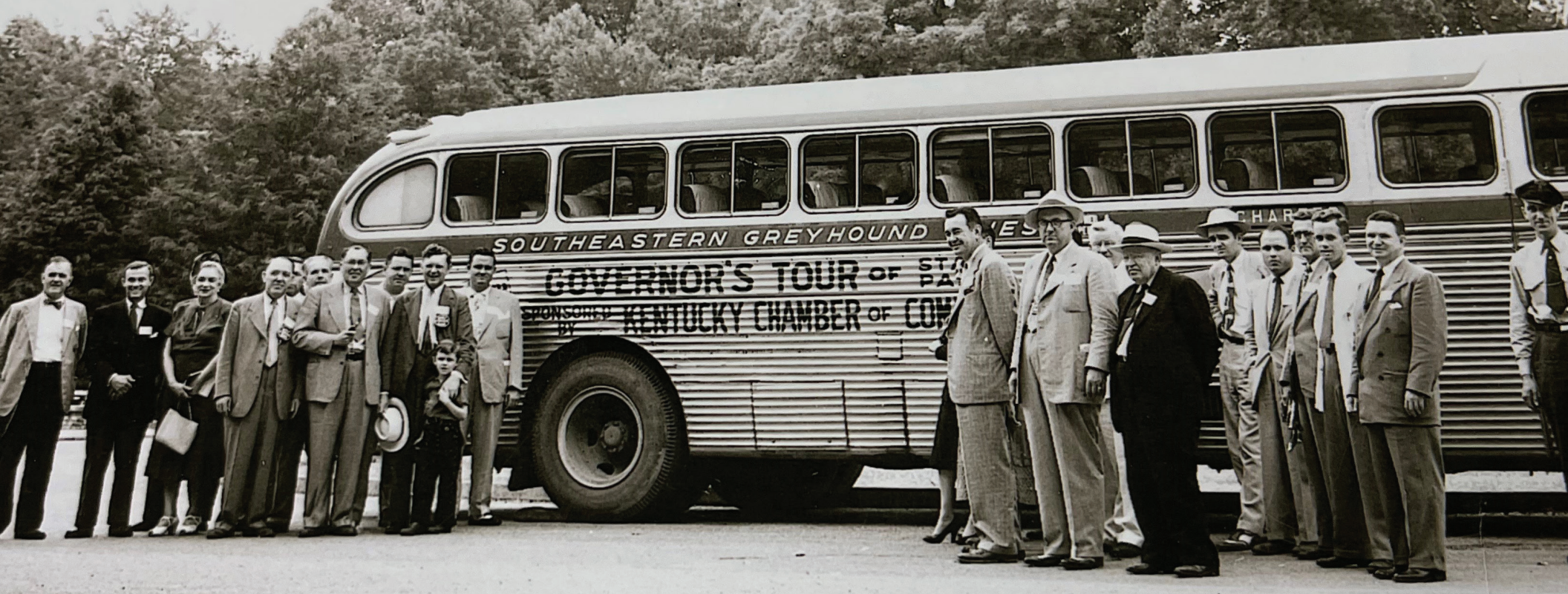
In the midst of the COVID-19 pandemic, the requirement that an individual must be searching for work in order to receive unemployment benefits was temporarily turned off. But now, a year later, it will be reinstated as Kentuckians are being vaccinated and the state looks to get people back to work.

Starting May 9, individuals seeking benefits will need to report to the state they have made at least one contact per week about a job in order to receive bi-weekly benefits. This is a normal part of the unemployment insurance system outside of the pandemic and many other states are taking the same steps in recent months.

[SEE WORK SEARCH REQUIREMENT, PAGE 3](#)



**KENTUCKY
COMEBACK**
HOPE. HEALING. AND A FAIR CHANCE



FROM THE FRONT

75th Anniversary

In many respects, this work resembles a network of interwoven initiatives that reinforce each other and the business community's continuing work to ensure Kentucky's progress.

Education has been a Chamber focus from the early days and remains its top policy priority. A Chamber study in the early 1960s focused on the progress of education and encouraged business support for raising education levels. That emphasis continued through the 1990 passage of the Kentucky Education Reform Act with strong business backing and subsequent initiatives addressing postsecondary education, essential skills, academic standards and business-education collaboration.

The Kentucky Chamber has placed a focus on education through multiple initiatives including:

- Playing an instrumental role in passage of the Kentucky Education Reform Act (KERA), which was prompted by the Kentuckians for Excellence in Education
- Formation of the Leadership Institute for School Principals program which launched in partnership in 2011 with BB&T, now Truist, offering public and private school principals the opportunity to participate in executive-level leadership training that is fully funded by businesses, individuals and communities
- Release of strategic plans prioritizing improving education including the *New Agenda for Kentucky*, *A Citizen's Guide to Kentucky Education*, *A Guide to Accountability in K-12 Education*, *Striving to be Top Tier for Talent*, and more

Improving Kentucky's competitive position has taken the form of tax reforms to strengthen the business climate for corporations and small businesses alike, modernizing the state's workers' compensation and unemployment insurance systems and advancing public-private partnerships.

Strengthening the state's workforce continues as the focal point of the Chamber's Workforce Center, workplace wellness initiatives, opioid response program for business and numerous other efforts.

Ensuring affordable energy costs has always been a top priority of the Chamber. Kentucky plays a critical role in manufacturing and its low-cost, reliable energy is a key reason for developing this sector. Kentucky's reliance on coal production, a signature industry, and policies that prioritized cost and reliability have kept Kentucky competitive at attracting manufacturing.

Protecting taxpayers' interests has meant raising awareness of unsustainable state spending on public pensions, corrections and Medicaid and pushing for sensible changes. Continuing to pay attention to this often-tedious topic positioned the Chamber as a common-sense voice for fiscal responsibility.

While these highlights don't reflect a comprehensive list of the varying elements of the Chamber's work, they do represent an ongoing commitment to the businesses of Kentucky and the people they employ to advance Kentucky.

Celebrate with us!
75 YEARS STRONG.



SCAN ME

LEARN MORE

Learn more about the Chamber's 75 Anniversary celebration at www.kychamber.com/75Years.



Stronger Together Trade Discussion

WITH THE EUROPEAN UNION, KENTUCKY AND OHIO

On April 13, the Kentucky Chamber sponsored a trade roundtable event with the European Union to bring together chamber members together with businesses from other states and countries to discuss partnerships and other opportunities.

GET INVOLVED

Learn more or get involved with the Discover Kentucky initiative, contact **Jessica Moore** at jmoore@kychamber.com.



FROM THE FRONT

Criminal Justice Laws

After years of being put on the backburner, it has been incredibly encouraging to see more criminal justice and recovery-related reforms move through our legislature. I'm grateful that we have the support of public officials who understand that our state will not make a comeback without addressing the complex and deeply rooted problems facing our communities.

Kentuckians who have served their time and are ready to get to work deserve the opportunity to do so, and that's why cleaning up our criminal justice system should be a routine thing. If individuals in recovery are willing to do the hard work to break the chains of addiction, our system shouldn't hold them down.

Kentucky Comeback will be working with our elected officials to continue crossing important items off the list. Just like a cluttered room, a little bit of spring cleaning can make all the difference moving forward.

JOIN THE NETWORK

Learn more about Kentucky Comeback and join the network at www.kentuckycomeback.com.



FROM THE FRONT

Work Search Requirement

Outside of some exceptions, out-of-work Kentuckians will need to report specific information about where they've tried to find full-time work to be considered eligible for benefits including the name of the business, job title, name and title of the person contacted, date of contact, and whether the correspondence was over phone, email, etc.



"The Kentucky Chamber supports turning on the Work Search Requirement. Kentuckians returning to work is a vital step to recovering our economy and ensuring our citizens' health, well-being, and future prosperity. For Kentuckians entering a job search, the Kentucky Chamber provides a list with over 95,000 positions currently available across the state on the 'Who's Hiring' page of our website," said Beth Davisson, Vice President of Workforce Development, Kentucky Chamber of Commerce.

Check out the latest job postings at www.kychamber.com/whoshiring.



KENTUCKY CHAMBER MVP Award Recipients

The 2021 General Assembly saw progress on many issues important to the business community. The Kentucky Chamber announced the recognition of ten legislators who displayed conspicuous actions which helped ensure this success.

Recipients of the 2021 Kentucky Chamber MVP Award showed strong leadership for the business community by sponsoring or carrying Kentucky Chamber priority legislation, showing leadership on passage of critical legislation to improve Kentucky or by taking hard votes in defense of business.

"The business community wants to recognize the legislators who went out of their way to help Kentucky's economy get back on track after such an unprecedented year," said Kentucky Chamber President and CEO Ashli Watts. "It is critical we continue to work together as we recover and rebuild for a stronger tomorrow.

Below are the legislators selected for this year's MVP awards and highlights of how they went to bat for the business community this session:

- **Senate President Robert Stivers** championed priority legislation that will protect employers from frivolous lawsuits relating to COVID-19. He also played a crucial role in passing legislation to help replenish the drained Unemployment Insurance Trust Fund and pay down the federal loan.
- **House Speaker David Osborne** was crucial to passing and supporting issues important to Kentucky's business community including COVID-19 liability protections for employers and appropriating funds to replenish the Unemployment Trust Fund and pay down the federal loan.
- **Rep. Adam Bowling** championed legislation that establishes a framework for communities to become "Recovery Ready," bringing much needed consistency to local substance use prevention, treatment and recovery efforts.
- **Rep. Matt Koch** played a key role in passing and supporting priority legislation which allows historical horse racing operations to resume at the state's licensed horse tracks after a Kentucky Supreme Court decision in September 2020.
- **Rep. Adam Koenig** was instrumental to the passage of many priority issues for Kentucky's signature industries, including legislation to improve direct-to-consumer shipment of alcohol, resume historical horse racing operations after a Kentucky Supreme Court decision in September 2020, and allow restaurants to sell alcohol with to-go and delivery orders.
- **Rep. Ed Massey** sponsored legislation that will make fiscally responsible changes to the Kentucky Teachers' Retirement System (KTRS) for any newly hired teachers. He also sponsored legislation that will help remove

barriers to individuals who have made mistakes by raising the felony theft threshold from \$500 to \$1,000 and carried the COVID-19 liability protection bill on the House floor.

- **Rep. Kim Moser** championed legislation to remove barriers to reentry for those exiting the corrections system by providing a certificate of employability for individuals following success in programs completed while incarcerated.
- **Rep. Bart Rowland** sponsored priority legislation relating to the coronavirus pandemic to waive penalties and interest on unemployment insurance tax bills to give employers flexibility to make payment and prohibit state and local agencies from enforcing COVID-19 restrictions more stringent than the CDC.
- **Rep. Russell Webber** sponsored and passed legislation to provide unemployment insurance tax relief as huge increases in unemployment insurance rates were expected for employers as a result of the COVID-19 pandemic.
- **Rep. Walker Thomas** championed legislation that brings Kentucky in line with most other states to require that our safety and health regulations be no more stringent than those set by the federal government.

MORE INFO

See how the MVP Award recipients and other legislators voted on business issues during the 2021 Kentucky General Assembly, view the Chamber's Results for Business publication at www.kychamber.com.



KENTUCKY CHAMBER BOARD *Meets in Lexington*

In April, the Kentucky Chamber held its first in-person meeting of the Board of Directors since January 2020. As Kentucky begins to recover from COVID-19, business leaders from across the state gathered in Lexington in a safe, socially distanced environment to discuss the top issues facing the state, hear from top political figures, and more.



Kentucky Chamber Board Chair Winston Griffin talks with former Ambassador to the United Nations Kelly Craft.

KENTUCKY CHAMBER WORKFORCE CENTER'S TALENT PIPELINE MANAGEMENT (TPM) SYSTEM RELEASES *Educational Insights Directly From the Business Community*



LAKISHA MILLER
TALENT PIPELINE
MANAGEMENT SYSTEM
DIRECTOR
KENTUCKY CHAMBER
WORKFORCE CENTER

The demands of today's economy require a strategic alignment between employers, education and workforce partners, and the state in order to better support Kentuckians as they enter into today's workforce. By making Talent Pipeline Management (TPM) a priority, more than 200 employers across Kentucky are working toward this alignment and seeing results.

Our state spends approximately \$1.2 billion every year to train and upskill Kentuckians into career pathways. TPM employers have evaluated 148 critical positions through competency and credential analysis helping determine which educational requirements are essential when hiring into critical positions. Now, the Kentucky Chamber Workforce Center has compiled this information in the TPM Educational Insights Map to provide a state-level and regional view of what academic requirements

employers have deemed most critical.

Kentucky Chamber Workforce Center Talent Pipeline Management System Director LaKisha Miller said, "TPM has produced educational insights directly from the business community. The TPM Educational Insights Map will help the business community send more precise signals to our education and workforce partners to train, develop, and upskill in the career pathways most needed to support Kentucky's economy."

Through this work, employers have determined that 94% of the 148 critical jobs evaluated through TPM require a high school diploma or equivalent. Additionally, 49% of those jobs require a college degree. This data proves that greater educational attainment will lead to a more skilled and productive workforce in Kentucky and will prepare the state for the jobs needed to support the economy in two to four years. You can review the complete report at www.kychamberworkforce.com.

Since the start of the pandemic, Kentucky has lost close to 296,000 jobs. As of November 2020, the state has seen some jobs return to the economy, but there are still 64,000 less Kentuckians employed than in February 2020. Innovations in technology are occurring every day, changing our world and our work at an unprecedented speed.



Mary Pat Regan, Kentucky's Deputy Secretary of Education and Workforce Development, stated, "We have to prepare Kentuckians and our communities for this new phase in workforce development. The technical skills we learned five years ago are nearly obsolete, making up-skilling our workforce a necessity. Our employers play a vital role in driving conversations on the skill sets and talents needed to build Kentucky's workforce."

By fall 2021, TPM Kentucky will roll out regionally aligned professional development sessions to introduce counselors and education partners to career pathways within Kentucky's key industries.



GET INVOLVED

If you are an employer in need of talent, get involved by contacting lmiller@kychamber.com to be connected with your local TPM Project Manager.

Keeping You **CONNECTED**

EVENTS | WEBINARS | PUBLIC POLICY | RESOURCES

kcce

Kentucky chamber of
commerce executives



NEW!

Local Chamber Resource Page

The Kentucky Chamber of Commerce Executives has launched a new page on the Kentucky Chamber of Commerce website that is dedicated to local chamber resources. This will be a quick way for local chamber executives to find any information they need from the state chamber. It has information and contacts for **chamber professional resources, public policy and advocacy resources, and member discount services.**

Visit www.kychamber.com/localchamberresources.



100 COMPANIES NAMED

Best Places to Work in Kentucky

The Kentucky Chamber of Commerce, the Kentucky Society for Human Resource Management (KYSHRM) and ClearPath Mutual Insurance Company announce the 100 companies (in alphabetical order) that made the **17th Annual Best Places to Work in Kentucky** list. Ranked winners will be announced at the Awards Dinner on **June 17** at the Central Bank Center in Lexington.

The selection process, managed by Best Companies Group, is based on an assessment of the company's employee policies and procedures and the results of an internal employee survey.

The competition is a multi-year initiative designed to motivate companies in the Commonwealth to focus, measure and move their workplace environments toward excellence. Numerous studies show a strong correlation between profitability and creating a good place to work.

****Kentucky Chamber members noted in bold**



SMALL COMPANIES

Companies of 15-149 U.S. Employees

- All Star Purchasing
- Alpha Business Acquisitions, Inc.
- **Associations International**
- Bim Group
- Bitwerx
- BUDGET For The People
- **Clay Ingels Co. LLC**
- **Connected Nation**
- **Copperhead Environmental Consulting, INC.**
- CORNETT
- **DBL Law**
- **Delta Dental of Kentucky, Inc.**
- **Fahe**
- FNB Bank
- **Forcht Broadcasting**
- **Hardin County Water District No. 1**
- **Kerr-Greulich Engineers**
- **KLH Engineers**
- **Marine Solutions, Inc.**
- Massage Envy Lexington
- **MCF**
- Metro United Way, Inc.
- **MiddleGround Capital**
- Middleton Reutlinger
- Mirazon
- **NetGain Technologies, LLC**
- **Peel & Holland, Inc.**
- **PEOPLE PLUS, INC.**
- PriceWeber
- **Rajant Corporation**
- Strategic Marketing
- Strothman and Company
- **Town & Country Bank and Trust Company**
- **Tri-Arrows Aluminum Inc.**
- United States Hunter Jumper Association
- Venminder, Inc.
- Victory Mortgage
- Volta
- **Ward, Hocker & Thornton, PLLC**
- Wehr Constructors, Inc.

MEDIUM COMPANIES

Companies of 150-499 U.S. Employees

- **AE Electrical Solutions**
- **ARGI**
- **Associates in Pediatric Therapy LLC**
- Blue & Co., LLC
- **Car-Part.com**
- **Columbia Gas of Kentucky**
- **Commonwealth Credit Union**
- **Community Financial Services Bank**
- **Dean Dorton**
- **Forcht Bank**
- **Independence Bank**
- **Interapt**
- KECH, Inc.
- KEEN Footwear
- Kentucky Bank
- **Kentucky Lottery Corporation**
- **L&N Federal Credit Union**
- Limestone Bank
- LockNet LLC
- Louisville Tile Distributors
- **MCM CPAs & Advisors LLP**
- Park Community Credit Union
- PharmaCord
- Revocore
- Shepherd Insurance
- **Southcentral Kentucky Community & Technical College**
- **Stites & Harbison, PLLC**
- **UofL Health - Shelbyville Hospital**
- **Winterwood Inc.**
- Xometry

LARGE COMPANIES

Companies of 500 or More U.S. Employees

- **Amgen**
- Appriss, Inc
- **AssuredPartners**
- Bastian Solutions
- **Bluegrass Care Navigators**
- Booz Allen Hamilton, Inc.
- **Central Bank & Trust Co.**
- **CHI Saint Joseph Health, Saint Joseph London**
- **Corning**
- **CSI**
- Edward Jones
- Envoy Mortgage, Ltd.
- **Farm Credit Mid-America**
- **Fischer Homes**
- **Galen College of Nursing**
- **Genentech**
- ISCO Industries
- Jack Henry & Associates
- **Kentucky American Water**
- **Kentucky Power Company**
- **KORT**
- **Long John Silver's, LLC**
- **Neustar Inc.**
- **Republic Bank**
- **Rockcastle Regional Hospital and Respiratory Care Center**
- Sature, LLC
- **Signature HealthCARE Consulting Services**
- **Steptoe & Johnson PLLC**
- Total Quality Logistics
- V-Soft Consulting

FOR MORE DETAILS OR TO REGISTER

For more details about **Best Places to Work in Kentucky**, visit www.bestplacestoworkky.com.

Thank you for your investment.

The following is a list of new members of the Kentucky Chamber. Please help us thank these companies for investing in the Chamber's mission by giving them your business.

CHAIRMAN'S CIRCLE

CRH Americas Materials

TRUSTEE

Association of Equipment Manufacturers (AEM)
Atlas Air/Southern Air/Polar Air Cargo
Catalent Pharma Solutions, LLC
Lockmasters

EQUITY PARTNER

Allen Company, Inc.
Atkins & Pearce, Inc
Blue Diamond Industries, LLC
BrightView Health
CORA Physical Therapy
Novo Nordisk, Inc.
Peter Cremer North America
Rising Sun Developing, INC.
Rood & Riddle Equine Hospital
Schmidt Associates
Toyotomi America Corporation
Western Governors University

CORNERSTONE

Center for Employment Opportunities
Chapin International Inc.
Coleman Crest Farm
DiamondGame
Goodwin Farm LLC
Life Learning Center
Robert Alexander Center for Recovery

STAKEHOLDER

Accutran Industries, Inc./Proteck
Achieve Business Group
Aleseria Farm
Bluegrass Metal Works Inc
Boone County Public Library
Branded, A Division of Williams Advertising
Brighton Center, Inc.
Copperhead Environmental Consulting, Inc.
Cornbread Hemp
Denali Stud
Emerald Therapy Center
Expense Reduction Analysts
Flottman Company
Garrard County Chamber of Commerce
Gen Nine, Inc.
God's Pantry Food Bank
Hampton Inn & Suites Louisville East
Hoehn Plastics
Katayama American Company, Inc.
Kelley Construction Company
Landmark of Bardstown
Liberty-Casey County Chamber of Commerce
Louisville Independent Business Alliance
Louisville Institute of Technology
McLean County chamber
Metro Towing LLC
Middletown Chamber of Commerce
Mill Ridge Farm, Ltd.
Opportunity for Work and Learning
Paris-Bourbon County Chamber of Commerce
Piston Automotive
Ply-Tech Corp.
RA Jones
Restoration Systems
Right on Crime
Roaring Brook Recovery
RSS
Saint Joseph Childrens Home
Sana Benefits
Sargent & Greenleaf, Inc.
Siemens Industry, Inc. - Building Technologies Division
Simply Embroidered
Studio 34 Productions
Syers Browning
The Jockey Club
The MPI KY, LLC
The Social Boutique
The Wrigley Taproom & Eatery
Thoroughbred Idea Foundation
West Bloodstock
West Kentucky Workforce Board
Williamsburg Health and Rehabilitation Center

KENTUCKY CHAMBER NEWS

For address changes and subscription information, call 502-848-8723.

KYSHRM CONFERENCE

Keynote Announced

AUGUST 31— SEPTEMBER 2, 2021
GALT HOUSE HOTEL | LOUISVILLE

Society for Human Resource Management (SHRM)
1:30 PM | Aug 31, 2021
Keynote: Diversity and Inclusion

Johnny C. Taylor, Jr., SHRM-SCP, President and Chief Executive Officer of the Society for Human Resource Management (SHRM) will kick off the **Kentucky Society for Human Resource (KYSHRM) Conference**, presented by Kentucky Career Center, at 1:30 p.m. on Tuesday, August 31 at the Galt House Hotel in downtown Louisville. His keynote will address diversity and inclusion in the workplace. As the leader of the world's largest HR professional association, he is an in-demand expert on employment, culture and leadership issues in the workplace.



Johnny C. Taylor, Jr.
KEYNOTE SPEAKER

President and Chief Executive Officer
Society for Human Resource Management (SHRM)

37th Annual Conference
KYSHRM
Aug. 31 - Sept. 2, 2021 | Galt House Hotel | Louisville

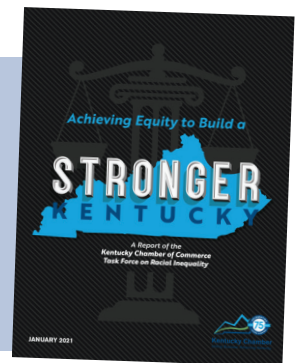


REGISTER NOW

To register or learn more about the KYSHRM conference visit kyshrmconference.com.

VIEW MORE

The Chamber just released its Achieving Equity to Build a Stronger Kentucky report in January. View the report at kychamber.com.



Pictured above: Kentucky Chamber's 2020 Board of Directors.

Nominations FOR BOARD OF DIRECTORS DUE

The nomination process is now open for Kentucky Chamber Board of Directors seats beginning on Oct. 1, 2021. Nominations should contain name, title, organization, city and a brief statement of leadership activities.

For more information, or to nominate an individual, contact **Candy Keeton** at [ckeeeton@kychamber.com](mailto:ckeeton@kychamber.com) or 502-848-8741. **Nominations are due by May 24, 2021.**



Kentucky Chamber
Uniting Business. Advancing Kentucky.

Kentucky Chamber's Inaugural Women's Summit

presented by BROWN-FORMAN

July 19, 2021 | Griffin Gate Marriott Golf Resort & Spa | Lexington

FEATURING



ASHLI WATTS
President and CEO
Kentucky Chamber



DR. NEELI BENDAPUDI
President
University of Louisville

Save the Date! Additional speaker announcements coming soon!
kychamber.com/events/womenssummit

KENTUCKY CHAMBER EXPANDS PUBLIC AFFAIRS EFFORTS WITH *New Policy & Grassroots Positions*

In April, the Kentucky Chamber announced two new positions in the Public Affairs department of the organization focused on growing its research and grassroots efforts.

With the hire of a Senior Policy Analyst, the Chamber is committed to growing its research capacity with in-house talent. In addition to advocacy, the Chamber is known for groundbreaking research such as the "The Leaky Bucket Report," reports detailing Kentucky's workforce participation and most recently, highlighting racial inequality across the Commonwealth. This position will ensure the Chamber will continue to be a leading voice of research to assist our efforts of advocating for a stronger business climate and economy.

To fill the role, the Chamber has hired Charles Aull. Aull comes with many years of experience; most recently as Director of Government Affairs and Public Policy with Greater Louisville Inc (GLI), The Metro Chamber of Commerce. He also has an impressive educational background earning his PhD in History & Government,

both an M.A. in History and an M.A. in Classics (all from Indiana University). He also completed a B.A. in History from the University of Southern Indiana. His research has been cited in outlets such as The New York Times and The Washington Post.

Additionally, the Chamber has created a field organizer position and hired Jon Dye. In this role, Dye will be responsible for building grassroots support and organization around key policy issues important to Kentucky's business community.

Dye is an experienced public affairs professional with a strong background in constituent services, political organizing, and working with various interest groups. He joins the Kentucky Chamber after working as a regional field director for the Republican Party of Kentucky assisting with Senator Mitch McConnell's campaign. He has also worked in constituent services for Congressman Andy Barr and field organizing for the National Republican Senatorial Committee. Jon is from Prestonsburg and is a graduate of Morehead State University.

Mark Your Calendars

2021-2022

- June 17** | 17th Annual Best Places to Work in Kentucky | Central Bank Center – Lexington
- June 21** | Golf Invitational at Valhalla | Valhalla Golf Course – Louisville
- July 19** | Inaugural Kentucky Women's Summit | Griffin Gate Marriott Resort & Spa – Lexington
- August 31-September 2** | 37th Annual Kentucky SHRM Conference | Galt House Hotel – Louisville
- September 23-24** | 15th Annual Business Summit and Annual Meeting | Louisville Marriott Downtown – Louisville
- November 16** | Kentucky Entrepreneur Hall of Fame | Griffin Gate Marriott Resort & Spa – Lexington
- January 6** | 26th Annual Kentucky Chamber Day Dinner | Central Bank Center – Lexington

**All dates and locations are tentative and subject to change.*



Kentucky Chamber Key Investors

Commonwealth Partner



Chairman's Circle



Champion



Advisor



Trustee

- | | | | | |
|--|---|---------------------------------|----------------------------------|-----------------------------------|
| Addiction Recovery Care | CertainTeed | FMS Commercial Cleaning | Meritor-Florence | Step toe & Johnson PLLC |
| AppHarvest | Chase | Gray Construction | Mississippi Lime | Stock Yards Bank and Trust |
| Association of Equipment Manufacturers | Citizens National Bank | Hyster-Yale Group Inc. | Mubea North America | Sullivan University System |
| Assured Partners | Coca-Cola Bottling Company Consolidated | Kentucky Hardwood Lumber Co. | Nationwide Insurance | Sumitomo Electric Wiring Systems |
| Atlas Air | Commonwealth Credit Union | Kentucky League of Cities, Inc. | Norfolk Southern Corporation | Tennessee Valley Authority |
| Bexion Pharmaceuticals | Community Trust Bancorp. Inc. | Kinetic by Windstream | Pinnacle Treatment Centers | Transit Authority of River City |
| Big Ass Fans | Computer Services, Inc. Db a CSI | Laurel Grocery Company | Piramal Pharma Solutions | Verizon |
| Brenntag | Corning Incorporated | Lockmasters | Planters Bank, Inc. | Washington Penn Plastic Co., Inc. |
| Cardinal Hill Rehabilitation Hospital | Dean Dorton | Louisville Water Company | Republic Bank | Whitaker Bank |
| CareSource | Deloitte Consulting | Martinrea Heavy Stamping | Scotty's Contracting & Stone LLC | |
| Carespring Healthcare Management, LLC | Dismas Charities | McBrayer PLLC | Speranza Therapeutics | |
| Catalent | Dorman | Merck & Co. | Stantec | |
| Century Aluminum of Kentucky, LLC | First Breckinridge Bancshares Inc. | | | |

Save Your Business Time & Money!

The Kentucky Chamber offers these **exclusive benefits** to save your business money and time so you can stay competitive in today's marketplace.



Kentucky Chamber
MEMBER SAVINGS

SMALL GROUP HEALTH COVERAGE

Small business plans designed to serve **employers with 2-50 employees**, all backed by Anthem of Kentucky.



NEW!

INDIVIDUAL HEALTH COVERAGE

Anthem Enhanced Choice plans are a **NEW option** for a changing world.



WORKERS' COMPENSATION

ClearPath Mutual is helping employers save money and protect their employees. All members who meet underwriting guidelines will receive a **10% discount**.



NEW!

WASTE AND RECYCLING

Rubicon provides cost-effective waste and recycling solutions for businesses so they can save money, increase efficiency, and operate more sustainably. **Members enjoy preferred pricing.**



NEW!

HUMAN RESOURCES AND SALARY DATA

Salary.com is the leading provider of human resources compensation data, reports and surveys. Members receive **free data and exclusive pricing.**



ACCIDENT AND CRITICAL ILLNESS INSURANCE

Members enjoy **exclusive savings** with The Standard on accident and critical illness insurance, providing affordable options for their employees.



MAY 2021

Kentucky Chamber CELEBRATING

75

1946

2021

YEARS STRONG

Uniting Business. Advancing Kentucky.

CONTACT US TO LEARN MORE

Shawna Burton — sburton@kychamber.com | (502) 848-8797 | kychamber.com/membersavings