



Kentucky Chamber
Uniting Business. Advancing Kentucky.

Occupational Safety and Health for the Health Care Industry

October 29-30, 2019 | DoubleTree Suites by Hilton, Lexington

**SPECIAL
OFFER**
Send 2 and
receive the
3rd FREE!

Agenda

Occupational Safety and Health for the Health Care Industry

Day One

8:00 a.m.

Registration and Continental Breakfast

8:30 a.m.

Conference Begins

- Introduction to Occupational Safety and Health (OSH)
 - The OSH History and Profession
 - OSHA and General Duty Clause
 - Hazard Overview of Health Care Industry
- Bloodborne Pathogens
 - Exposure Control Plan
 - Epidemiology
 - Housekeeping Procedures
 - Standard Precautions
 - Training
 - Needlestick Safety and Prevention
- Emergency Planning
 - Emergency Action Plan
 - Means of Egress
 - Violence in the Workplace/Terrorism

12 p.m.

Lunch (provided)

- Hazard Communication
 - Written Program Requirements
 - Chemical Hygiene Plan
 - Radiation Safety
 - Tuberculosis
 - Ethylene Oxide
 - Formaldehyde
- Laboratory Safety Requirements
 - Fume Hoods
- Electrical/Lockout-Tagout
 - Wiring Design and Protection
 - Control of Hazardous Energy

4:15 p.m.

Day One Adjourns

Day Two

8:00 a.m.

Continental Breakfast

8:30 a.m.

Conference Continues

- Walking Working Surfaces
 - Guarding Floor and Wall Openings and Holes
 - Stairs and Railings
 - Ladders
- Personal Protective Equipment
 - PPE Assessments
 - Eye & Face Protection
 - Hand Protection/Latex Allergies
 - Respirators
- Medical/First Aid Requirements
 - Infectious Disease Control
 - Sanitation

12 p.m.

Lunch (provided)

- Ergonomics
 - Physical stressors
- Recordkeeping and Reporting
 - Recording Criteria
 - Reporting Requirements
- Hazard Recognition and Program Management
- Q & A Roundtable

3:30 p.m.

Conference Adjourns



If you are not 100 percent satisfied with your seminar experience, we will refund your money.

continuing education

CEU/CPE

This program may be eligible for CEU and CPE credits. Contact your professional board to find out what's required.

about membership

It's not too late to take advantage of the membership discount. To learn more, call 502-695-4700 and ask for a membership representative.

why attend

Employers who provide inpatient and outpatient medical, nursing and dental services to the public may face the widest range of job-related hazard/exposures of all occupational business sectors. Exposures can include chemical and physical agents, pharmaceuticals, infectious diseases and ionizing radiation to name a few.

Medical employers are required by the Occupational Safety and Health Act to provide a workplace free from recognized hazards that may pose harm to their employees. The Occupational Safety and Health Administration (OSHA), creates and enforces mandatory requirements (OSHA Standards) many which apply to medical and related operations.

This two-day course will cover the background and relevance of applied Occupational Safety and Health (OSH) Management practices and will specifically discuss and clarify those OSHA regulations applicable to health care operations.

Get your questions answered regarding:

- What standards apply to us?
- How do we meet OSHA compliance requirements for our industry?
- What PPE do we need?
- What training does OSHA require?
- What are the industry best practices?

Attendees will also receive user-friendly compliance templates and reference guides.

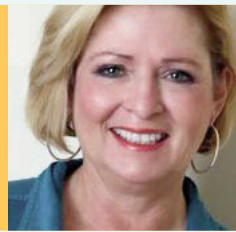
The course was designed specifically for health care providers and will be facilitated by two board certified Safety/Health Professionals (CSPs) with a wide range of safety experience, including health care.

who should attend?

Management, supervisors, administrative personnel, trainers and safety and health employees in any of the following Industries:

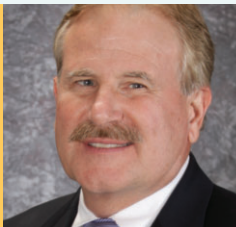
- Hospitals
- Medical offices
- Dental offices
- Medical and diagnostic laboratories
- Nursing and residential care facilities
- Rehab and physical therapy facilities
- Medical clinics
- Out-Patient surgery centers
- Ambulatory health care services

about about the speakers



Bobbi K. Samples, CSP, Owner and Principal Consultant, The Safety Firm, LLC

Samples is the owner and principal consultant of The Safety Firm, LLC. This is the sixth business she has successfully imagined, created, owned and operated. She received her business management degree from Indiana Wesleyan University and has worked at the executive level within Fortune 500 companies in the areas of human resources and safety. Through The Safety Firm, LLC, Samples works with multiple industries including health care, manufacturing, and construction to help them manage, audit, train, and grow their safety program to higher levels. She has been on consultative retainer to several outpatient medical facilities and numerous manufacturing sites. Besides directing the operations of The Safety Firm, she is a professional artist and innovative motivational speaker. She is consistently cited for her entrepreneurial approaches to training, professional growth and workforce solutions. [READ MORE ONLINE](#)



Bill Simkins, CSP, Post Incident Drug & Alcohol Testing, W.E. Simkins & Associates

Simkins has more than 35 years of applied occupational health and safety experience providing occupational health and safety management strategies to public and private sector business. Simkins was a director of environmental health & safety for PepsiCo's Frito-Lay North America, and Pepsi North America Beverages, operations, retiring in 2018. He now leads Simkins & Associates, a consulting practice providing safety and health leadership and compliance strategies. Simkins career includes 12 years as a commissioned U.S. Army medical officer. He has a B.S. in public health and an M.S. in chemical engineering from the University of Kentucky. He is a board-certified safety professional, a registered environmental professional, an associate member of the American Conference of Governmental Industrial Hygienists, and a professional member of the American Society of Safety Professionals.

Register

Occupational Safety and Health for the Health Care Industry



registration fees

\$595/Kentucky Chamber Member

\$695/Non-member

Special Offer: Send 2 and receive the 3rd registration FREE!*

*Contact Lori Jo Goff to take advantage. Government and Special Offer pricing not available online.

cancellations/substitutions

Cancellations must be made no later than five business days prior to the program for a full refund. After this date, no cash refunds will be granted. Substitutions are welcome. Special accommodations made upon request.

how to register

web

kychamber.com

phone

Call Lori Jo Goff

502-848-8727

e-mail

lgoff@kychamber.com

fax

502-695-5051

mail

Kentucky Chamber

464 Chenault Road

Frankfort, KY 40601

location and lodging

October 29-30, 2019 (81229)

DoubleTree Suites by Hilton

2601 Richmond Road

Lexington, Ky. 40509

Phone: 859-268-0060

Room Rate: \$119*

Room Cutoff Date: October 14, 2019

*The advertised Kentucky Chamber room rate cannot be guaranteed after the cutoff date. When contacting the hotel for lodging, please specify that you are with the Kentucky Chamber of Commerce's Occupational Safety and Health for the Health Care Industry to receive the discounted rate.

to register, please complete To process your order, the entire registration form must be complete.

Company _____		
Address _____		
City _____	State _____	Zip _____
Telephone _____	Fax _____	
Principal Line of Business _____		Number of Employees _____

complete for additional registrants

Registrants' Names	Titles	E-mail Addresses
_____	_____	_____
_____	_____	_____
_____	_____	_____

FREE

*I understand that by providing the phone, fax number and e-mail information above on behalf of the person/company/organization specified above, I am authorized to and hereby consent for the person/company/organization to receive communication by or on behalf of the Kentucky Chamber of Commerce.

payment

___ Conference fee enclosed with check payable to the Ky. Chamber. Check Amount \$ _____ Check # _____

___ Charge to: VISA ___ MC ___ American Express ___

Account # _____ Exp. Date _____ Security Code _____ Signature _____

___ Bill company PO# _____