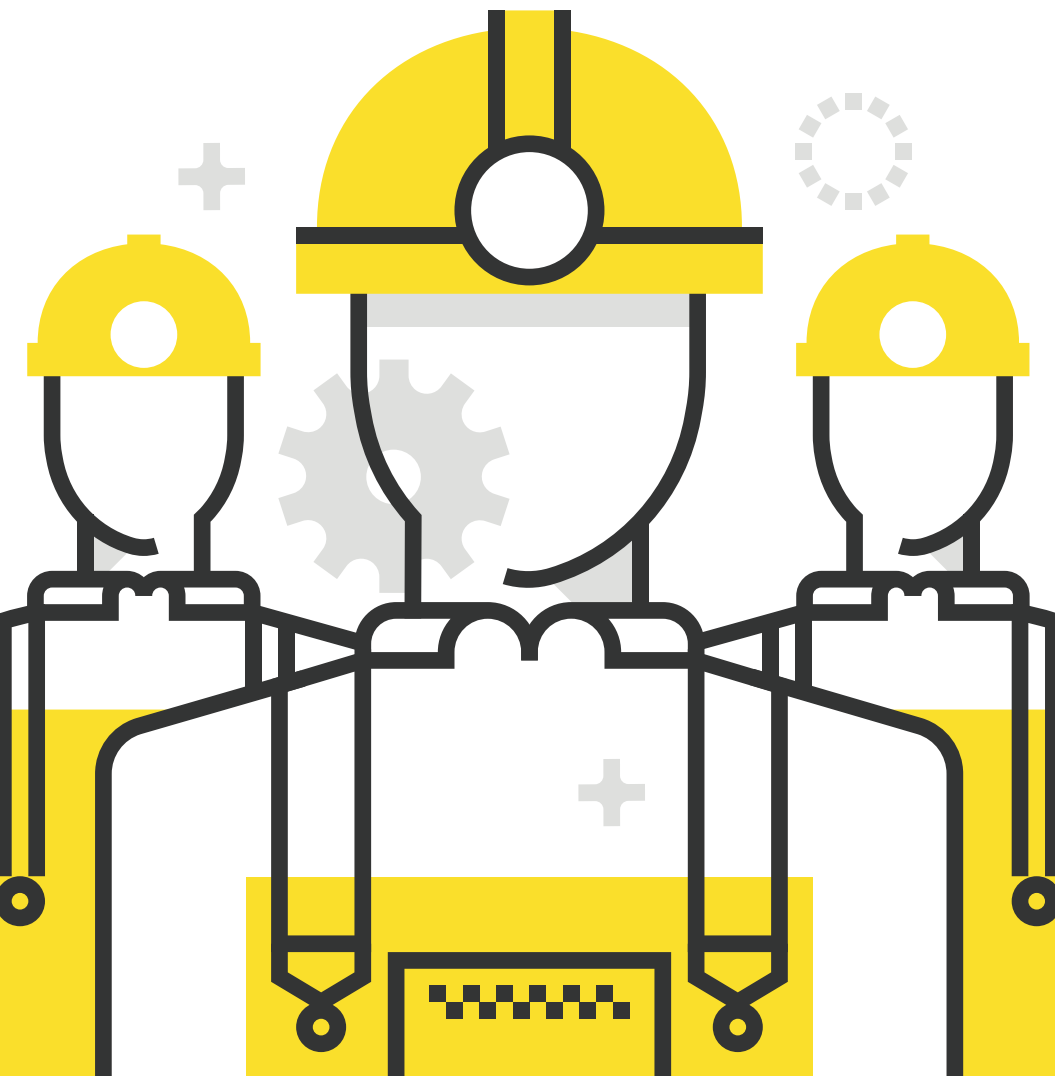




Kentucky Chamber
Uniting Business. Advancing Kentucky.

OSHA Train the Trainer

September 25-27, 2019 | Hilton Garden Inn Louisville Northeast



Three days of training!

Day One – Sept. 25
Lock-Out Tag-Out

Day Two – Sept. 26
Permit Required
Confined Spaces

Day Three – Sept. 27
Forklift

**Register for one day,
two days or all three!**

USB INCLUDED

Each trainer course includes a USB drive containing everything in your course manual. You can return to the job and use it to make your training specific to your organization.

Stay in compliance and avoid costly penalties.

OSHA Train the Trainer is a multi-day course covering three critical OSHA compliance topics.

The sessions are facilitated by Board Certified Safety Professionals (CSPs) with decades of applied safety and health compliance experience who will share their compliance insights and program tips.

In each course, attendees will receive a manual containing the presentations, examples of model programs and procedures, additional topic-specific references, and a USB drive that contains the topic material.

Register for one day, two days or all three days of training!

Who Should Attend

- Trainers
- Facility/Operations Managers
- Maintenance Personnel
- Human Resource Professionals
- Site Safety and Health Managers
- Safety Committee Members
- Safety Directors
- Supervisors
- Confined Space Entry Teams
- Lock-out Tag-out Authorized Individuals
- Team Leaders



Lock-Out Tag-Out Train the Trainer – Sept. 25

According to OSHA, failure to control hazardous energy accounts for nearly 10 percent of the serious accidents in many industries and is one of the leading Most Frequently Violated OSHA regulations each year. The Lock-Out Tag-Out standard establishes employers' responsibilities to protect workers from hazardous energy and requires employers to train each worker to ensure they know, understand, and are able to follow the applicable provisions of the hazardous energy control procedures.

8:00 a.m. | Registration and Continental Breakfast

8:30 a.m.

- Introduction to Lock-Out Tag-Out (The Control of Hazardous Energy) 1910.147
 - Purpose, Scope and Application of the Standard
 - Trainer Qualifications
 - Review of User Manual Content
- Lock-out Tag-out Program Content
 - Review of required content for trainers
 - Practical Application Exercises
- Energy Control Programs
 - Energy control procedures
 - Protective materials and hardware
 - Periodic inspections
 - Group LOTO
 - Shift changes
 - Lock removal procedures

- Training and Communication
 - Authorized and Affected employees
 - Re-training

11:30 a.m. | Lunch (provided)

- Contractors
 - Outside persons and contractors
- Lock-Out Tag-Out Case History Reviews
 - Multi energy source recognition
 - Hazard controls and behaviors
- Review & Knowledge Check
- Training Tips
 - Adult learning
- Final Questions Clarifications

4:15 p.m. | Adjourn





Permit Required Confined Spaces – Train the Trainer – Sept. 26

OSHA's Permit Required Confined Space standard became effective over two decades ago, yet for many businesses compliance remains an opportunity. Gaps in this OSHA regulated work area expose employees to risk of incident and employers to hefty fines and legal actions. This course is designed to comprehensively address OSHA's employer requirements, providing strategic compliance insights and perspectives, while providing a roadmap for employer and employee training.

8:00 a.m. | Registration and Continental Breakfast

8:30 a.m.

- Introduction to Permit Required Confined Spaces 1910.146
 - Purpose, Scope and Application of the Standard
 - Trainer Qualifications
 - Review of User Manual
- Permit Required Confined Spaces Program Content
 - Review of required content for trainers
 - Practical Application Exercises
- Permit Space Hazard Review
 - Atmospheric
 - Engulfment/Entrapment
 - "Other" Falls, Electrical, ..
- Permit and Permit Procedures
 - Hazard Identification & Evaluation
 - Equipment Required
 - Entry Preparation and Entry Roles
- Training and Communication
 - Scope & Application of Training
 - Re-training
 - Training Certification

11:30 a.m. |Lunch (provided)

- Contractors
 - Contractors working for Host Employers
 - Employer Obligations
- Rescue and Emergency Services
 - Rescue Planning and Considerations
 - External Rescue Providers
 - In-House Rescue Teams
- Review & Knowledge Check
- Training Tips
 - Adult learning
- Final Questions Clarifications

4:15 p.m. | Adjourn



Forklift – Train the Trainer – Sept. 27

OSHA's Powered Industrial Truck standard was revised in 1998, however, employees are still being killed or severely injured due to poor forklift programs and practices. This course will help to ensure your in-house forklift trainers are up to date and in compliance. This program will take the guesswork out of what constitutes a "qualified trainer." Attendees will learn how to effectively train their staff on the key points of safe and compliant forklift operation.

8:00 a.m. | Registration and Continental Breakfast

8:30 a.m.

- Introduction to Forklift (Powered Industrial Truck Standard) 1910.178
 - Purpose and Overview of Standard
 - Scope – What Falls Under the Standard?
 - Latest Statistics and Accidents from OSHA
 - In-House Trainer Qualifications
 - Overview of Your New Training Manual / CD
- Training Program Content
 - Safe Operations Responsibility
 - Conditions for Trainees
 - 13 Truck-Related Topics
 - 9 Workplace Related Topics
- Safe Truck Operations
 - Prohibited Behaviors
 - Traveling Requirements
 - Loading Safely
 - Unattended Mode
 - Specific Truck Safety
 - Maintenance of Industrial Trucks

11:30 a.m. | Lunch (provided)

- Other Training Requirements
 - Performance Certification
 - Stability Triangle Demonstration
 - Refresher training
 - Avoidance of Duplicative Training
- Inspection Requirements
 - What and When to Inspect
 - Documentation Requirements
- Review & Knowledge Check
- Training Tips
 - Adult learning
 - Helpful Tips for Training Co-Workers
 - Group Exercise and Demonstration
 - Questions and Answers
- Final Questions Clarifications

4:00 p.m. | Adjourn



Who Should Attend

- Trainers
- Facility/Operations Managers
- Maintenance Personnel
- Human Resource Professionals
- Site Safety and Health Managers
- Safety Committee Members
- Safety Directors
- Supervisors
- Confined Space Entry Teams
- Lock-out Tag-out Authorized Individuals
- Team Leaders

Continuing Education

CEU/CPE

This program may be eligible for CEU and CPE credits. Contact your professional board to find out what's required.

About Membership

It's not too late to take advantage of the membership discount. To learn more, call 502-695-4700 and ask for a membership representative.

Our Guarantee

If you are not 100 percent satisfied with your seminar experience, we will refund your money.

USB INCLUDED

Each trainer course includes a USB drive containing everything in your course manual. You can return to the job and use it to make your training specific to your organization.

Speakers



Bobbi K. Samples, CSP

Owner and Principal Consultant, The Safety Firm, LLC



Samples is the Owner and Principal Consultant of The Safety Firm, LLC. This is the sixth business she has successfully imagined, created, owned and operated. She received her Business Management degree from Indiana Wesleyan University and has worked at the executive level within Fortune 500 companies in the areas of human resources and safety. Through The Safety Firm, LLC, Samples works with businesses to help them manage, audit, train, and grow their safety program to higher levels. Besides directing the operations of The Safety Firm, she is a professional artist, acclaimed safety facilitator/presenter/trainer and innovative motivational speaker. She is consistently cited for her entrepreneurial approaches to training, professional growth and workforce solutions.



Bill Simkins, CSP

Post Incident Drug & Alcohol Testing, W.E. Simkins & Associates



Simkins has more than 35 years of applied occupational health and safety experience. He is a recently retired EHS director for PepsiCo's Frito-Lay North America, and Pepsi operations, where he directed health, safety and environmental strategies across North America. His broad work experiences have facilitated an extensive depth of knowledge in the applied health and safety field with deep expertise in hazardous energy control, permit confined spaces, hazardous & toxic substances, occupational medical practices, industrial hygiene, and respiratory protection. Prior to his executive management position with PepsiCo, Simkins provided safety and health consulting services to businesses in the private and public sectors. He was a commissioned U.S. Army medical service officer, where he served as troop commander of the 5010th U.S. Army hospital (reserve). Simkins has a B.S. in public health, an M.S. in chemical engineering and an M.S. in environmental science. He is a board-certified safety professional and a registered environmental professional. He is an associate member of the American Conference of Governmental Industrial Hygienists and a professional member of the American Society of Safety Professionals and the American Industrial Hygiene Association.



Register OSHA Train The Trainer

Registration Fees

- One-Day Training**
\$399/Kentucky Chamber Member
\$499/Non-member
- Two-Day Training**
\$599/Kentucky Chamber Member
\$699/Non-member
- Three-Day Training**
\$749/Kentucky Chamber Member
\$849/Non-member

How to Register

web
kychamber.com
phone
Call Lori Jo Goff
502-848-8727
e-mail
lgoff@kychamber.com

fax
502-695-5051
mail
Kentucky Chamber
464 Chenault Road
Frankfort, KY 40601

Location and Lodging

September 25-27, 2019 (81227)
Hilton Garden Inn Louisville Northeast
9850 Park Plaza Avenue
Louisville, Ky. 40241
Phone: 502-423-0018
Room Rate: \$129*
Hotel Room Cutoff Date: September 4, 2019

*The advertised Kentucky Chamber room rate cannot be guaranteed after the cutoff date. When contacting the hotel for lodging, please specify that you are with the Kentucky Chamber of Commerce's OSHA Train the Trainer to receive the discounted rate.

Cancellations/Substitutions

Cancellations must be made no later than five business days prior to the program for a full refund. After this date, no cash refunds will be granted. Substitutions are welcome. Special accommodations made upon request.

to register, please complete To process your order, the entire registration form must be complete.

_____ Company		
_____ Address		
_____ City	_____ State	_____ Zip
_____ Telephone	_____ Fax	
_____ Principal Line of Business		_____ Number of Employees

complete for additional registrants

Registrants' Names	Titles	E-mail Addresses
_____	_____	_____
_____	_____	_____
_____	_____	_____
_____	_____	_____

*I understand that by providing the phone, fax number and e-mail information above on behalf of the person/company/organization specified above, I am authorized to and hereby consent for the person/company/organization to receive communication by or on behalf of the Kentucky Chamber of Commerce.

payment

___ Conference fee enclosed with check payable to the Ky. Chamber. Check Amount \$ _____ Check # _____
 ___ Charge to: VISA ___ MC ___ American Express ___
 Account # _____ Exp. Date _____ Security Code _____ Signature _____
 ___ Bill company PO# _____